

A close-up, profile view of a golden retriever's head, facing right. The dog's fur is a rich golden-brown color, and its eyes are dark and focused. The background is a soft, out-of-focus green, suggesting an outdoor setting. The overall mood is calm and serene.

HOMeward BOUND GOLDEN RETRIEVER
RESCUE AND SANCTUARY

Dogs are love.

2016 Annual Report

Dogs are love.
UNCONDITIONAL LOVE.
BOUNDLESSLY ENERGETIC LOVE.
can make the worst day ever better love.
ALWAYS BY YOUR SIDE LOVE.
ENTHUSIASTIC, TAIL-WAGGING, SO-HAPPY-YOU'RE-HERE LOVE.
BARKING, FETCHING, RUNNING, CATCHING LOVE.
1000% LOYAL LOVE.
wait by the door 'til you come home love.
I DON'T CARE WHAT YOU LOOK LIKE LOVE.
will do anything for you love.
IT'S MY JOB TO PROTECT YOU LOVE.
EVEN WHEN YOU DON'T SHARE THE PEOPLE FOOD LOVE.
PURE ADORATION & UNRESTRAINED AFFECTION LOVE.
sorry I ate your shoe/i think you're the best person in the whole
world/playful/trusting/I will always come when you call me love.
I'll be your furry friend for life love.



will do anything for you love.

Our Mission. Homeward Bound Golden Retriever Rescue and Sanctuary, Inc. is an all-volunteer organization which rescues and heals displaced, abandoned, and homeless Golden Retrievers and Golden mixes, regardless of their age or health. Homeward Bound secures safe, loving homes through a comprehensive adoption program, and also provides lifetime sanctuary for Goldens that cannot be adopted.

Homeward Bound also provides education on proper animal care and on the benefits of, and need for, rescue and sanctuary. In the event of a disaster, Homeward Bound will provide assistance to other rescue groups and the families of dogs impacted by the disaster.

Homeward Bound will continue to serve as a model rescue organization, addressing animal welfare needs throughout California and neighboring states, and strives to be a national leader in rescue, sanctuary, and education.



BOUNDLESSLY ENERGETIC LOVE.



love.

To Old And New Friends Of Homeward Bound

When we came across the Kathy Jefford's poem and artwork "Dogs Are Love," we knew it needed a place here. In a perfect world, every dog has the chance to express the joyous qualities shared in her writing. Unfortunately, the world is not perfect. And that is why Homeward Bound is needed. For dogs that have been neglected, abused, abandoned, or have simply lost their home through no fault of their own – we are here to help them begin a new, joy-filled life. Dogs have incredible resiliency. Their gratitude is boundless. With medical care, emotional healing, training, and placement in caring homes we can make even their worst days "ever better with love."

In 2016, 355 dogs came through our doors. Since 2000, we have rescued, healed, placed, and provided sanctuary to more than 8,500 dogs – saving canine lives while transforming human ones. This remarkable achievement is made possible due to the dedication of our volunteers and supporters. Day in and day out, our volunteers are there to pull dogs from shelters far and wide, transport, feed, walk and bathe, train, and offer love. Our placement team and adoption counselors ensure safe and loving homes while making the best possible matches. Countless faces you never see keep our operation running. And each time we ask for help, our supporters step up to ensure that we can provide all of the care the dogs need – some of it extraordinary as you will read in these pages.

You may also notice that not all of our faces are Golden. Thanks to education and effective programs, the number of homeless Golden Retrievers continues to decline. A good thing. And an opportunity for us to open our program to other dogs in need as we have the capacity. We think you would want that.

Rescue may seem like a small thing in a world that has become so troubled and divisive. But we know that that rescue is hope, and hope is transformative. We speak and act on behalf of those who cannot speak and act for themselves and, in the process, our lives are changed for the better. Everything experienced at Homeward Bound was created out of hope and what we know to be true: dogs are love. From the bottom of my heart, I thank you.

Jody Jones, President

Jody Jones

Homeward Bound Golden Retriever Rescue and Sanctuary, Inc.

BOARD OF DIRECTORS

Jody Jones

President

Jana Hook

Secretary

Judy Kent

Treasurer

Justina Codde, DVM, MS

Candice Courtney

Audrey Farrington

Sara Floor

Deb Haggerty

Dominique A. Pollara

Carolyn Unger

Anna Schweissinger

A Look Back

Now, all of our short-term residents are housed in modern kennels for better sanitation and a calmer environment for all.

2016 Accomplishments

PHASE II OF THE KENNEL RENOVATION

A massive undertaking begun in 2015, the second half of our project was completed in 2016. Now, all of our short-term residents are housed in modern kennels made of stainless steel and glass, additional lighting, added windows for fresh air, and improved sound proofing – all for better sanitation and a calmer environment for all.

TUESDAY NEWS

Improving volunteer communication was a key goal for 2016. In January, we launched a weekly newsletter for volunteers called Tuesday News. In it, we share new arrivals, recent adoptions, behavioral and training updates, new procedures, and – of course – successes to keep everyone motivated.

MORE DOGS

As we continue to welcome dogs of golden heart if not Golden pedigree, our numbers are climbing. Our 2016 intake was 25% higher than the previous year, serving 355 dogs in total.

SUGAR SHACK ACRES

While we are not quite where we want to be, our donated engineering plan has been completed for the remodel of Sugar Shack Acres and its adjoining yard. The project became more extensive than we first imagined, as it will entail improved drainage for the entire facility. Based on our 2016/17 winter – that’s a good thing! We’ll start digging as soon as it dries out.

THE NATIONALS

Homeward Bound’s own Deb Haggerty co-chaired the Rescue Parade at the Golden Retriever Club of America’s National event which was held last October in Placerville, CA. This annual gathering moves to a different city each year. Having it in our own backyard allowed Homeward Bound to partner with Norcal Golden Retriever Rescue to bring national visibility to our work and mission of rescue.



Doug came to us emaciated, with skin ravaged by untreated allergies. Today, he is a volunteer canine blood donor at UC Davis, helping to save other dogs’ lives.



Our intake and “going homes” increased 25% over the prior year.

Our History and Facility

Our secured, eight-acre property includes ten large yards, a training pavilion, and a one-acre park for daily exercise, socialization, and meeting prospective adopters.

Homeward Bound was founded on a promise made to our founders' beloved Chelsea in the year 2000 – that if she would answer their prayers and recover from a life-threatening accident, that they would devote their lives to rescue. She did. And they did.

That pledge took physical form at Homeward Bound's sanctuary and adoption center in Elverta, CA near Sacramento. To have an actual facility is uncommon among rescues that typically rely solely on foster care. Our sanctuary allows us to provide support to dogs in immediate need who might not otherwise be saved.

Homeward Bound's short-term visitors are housed in a large barn which has been converted into a climate-controlled kennel, kitchen, grooming station, and laundry area. Here, dogs are safely housed as they undergo assessments and await their forever homes. They are visited daily by feeders and walkers who ensure that they get ample exercise, clean facilities, and love.

Some dogs with extraordinary needs remain in our care. Our sanctuary dogs are housed in separate lodging affectionately known as "Sugar Shack Acres." Their home-like accommodations include a large, attached yard so the dogs can come and go at will, visited and cared for by our volunteers.

A separate, on-site veterinary clinic is fully outfitted for blood testing, minor emergencies, basic care, and weekly house calls by our devoted volunteer veterinarian, Dr. Justina Codde. Our ability to blood test and transmit results to her nearby veterinary hospital saves time and expense and aids tremendously in managing medications for dogs with diabetes, thyroid, seizures, and other on-going chronic care needs.

Our secured, eight-acre property includes ten large yards, a training pavilion, and a one-acre park for daily exercise, socialization, and meeting prospective adopters. For those with mobility or weight issues, a donated heated swimming pool provides on-site water therapy – and a choice cooling off spot on those hot summer days.

Finally, our Memorial Garden offers a refuge for volunteers and dogs to spend quiet time together. It is the perfect place to celebrate adoptions with "going home" pictures shared with the families and friends over social media.



Our Memorial Garden offers a refuge for volunteers and dogs to spend quiet time together.





Ned. To see Ned in his original Facebook post, you would not have believed that a dog so badly abused could still have a heart of gold. But that's what Ned had. Despite all that he had been through, he just wanted love and human companionship. We healed his broken body and showed him kindness. He responded with devotion for the wonderful people who made him their own and will ensure that the rest of his years make up for his first.

Dogs are love.



I DON'T CARE WHAT YOU LOOK LIKE LOVE.
will do anything for you love.

Our People and Programs

Our Team: All-Volunteer Powered



More than 200 volunteers across the state contribute their talents, time, and passion.

As an all-volunteer organization, we can devote almost all of our resources to the direct support of the dogs. It takes many hands and talents to sustain our operation. More than 200 volunteers across the state contribute their talents, time, and passion. People from all walks of life come together with a shared love of dogs and a desire to help them on their journeys home.

Guided by our team leads, volunteers are involved in every aspect of our operation. The list is endless: transport and intake, feeding, cleaning, grooming, walking and socialization, veterinary transport, fostering, training, home visits, adoption counseling, undertaking facilities projects and maintaining our grounds, fundraising, events, marketing, office administration, and more.

Volunteers are truly the heart of Homeward Bound Golden Retriever Rescue, continually demonstrating their dedication to the dogs and our mission. Our gratitude is boundless.

Our Programs

GOLDEN TOUCH & PERMANENT FOSTER

These programs support our senior dogs and those with long-term special needs. Golden Touch helps individuals of a certain age make a senior-to-senior connection. Permanent Foster allows dogs with extraordinary needs to be home because, in both cases, Homeward Bound provides the dogs' medical care and special dietary needs for life.

EDUCATION & OUTREACH

Armed with knowledge, people can make and influence decisions that reduce the numbers of abandoned animals. Successful beginnings and strong bonds are created with our four-legged companions through proper training. Homeward Bound offers a free training resource library on our website as well as classes at our facility provided by Golden Rule Training to ensure that dogs remain in their homes.

For individuals who very much want the puppy experience, we offer resources on how to select a responsible breeder. By understanding and by sharing this information with others people can still contribute to our mission even if they choose purchase over adoption.

Finally, we continue to strengthen our network of connected rescue resources throughout the state and the country. Getting the right information into the right hands makes all the difference when time is of the essence.



Volunteers are the heart of Homeward Bound Golden Retriever Rescue. Our gratitude is boundless.





The Korea Dogs. Rescued by the Humane Society International from a meat market in Korea. Supported by SPCA of San Francisco (SPCA SF). Four of the dogs were still so severely traumatized that they still would not leave the kennels many weeks later. In March, SPCA SF reached out to us, and we gladly offered our help. Here, the dogs touched grass for the first time in their lives and a small team of dedicated volunteers went to work healing their wounded hearts. Within two weeks, they were walking the grounds. Within three months, they were home. Each has found a special family and an amazing second chance at life. Meanwhile, significant progress is being made to halt the sale of dog meat in Korean markets abroad.

Dogs are love.



PURE ADORATION & UNRESTRAINED AFFECTION LOVE.

Our Generous Supporters

You Gave In So Many Ways

DOUBLING THE LOVE.

Every year, a big-hearted few come together to build a large Fund of Love. This fund stands ready to match the donations of many through a second campaign, the Double the Gold Challenge. The combined annual campaigns provide critical support – covering a large portion of the medical needs of the dogs whose care exceeded \$250,000 in 2016.

A TOAST TO THE GOLDENS.

Party and Golden lovers sampled fine food and spirits before raising their paddles at our special 16th Annual Kibble & Bids™ event. Supporters gave generously at our largest and most visible fundraising event.

A TREE BEARING GIFTS.

Each Thanksgiving, we launch an unadorned virtual tree – and then we hope. By Christmas, you have brought it to twinkling life, loading the tree with presents, stars, and snowflakes – each representing a donation made in honor or memory of a special someone. The Giving Tree has grown into one of our primary fundraising efforts ensuring support for hundreds of dogs each year.

AMAZON SMILED.

You shopped. Amazon gave. AmazonSmile donates 0.5% of the price of eligible purchases to the charitable organization of your choice (we're hoping that is us!). It is such a simple way to give that costs you absolutely nothing.

WISHES FULFILLED.

In our newsletter, on our website, and through Amazon, we maintain our Wish List of most needed items. Boxes and boxes arrived full of leashes, toys, and treats – and pill pockets too! The dogs enjoyed comfy beds, blankets, towels, rugs, and sheets thanks to our overflowing linen closets. Keep 'em coming!

TURNING KIBBLE INTO CASH.

Thanks to our partnership with Nature's Select, for every large bag of Nature's Select Premium Pet Food purchased, Nature's Select donated \$3.00 back to Homeward Bound. This little act added up to more than \$12,000 in 2016. While you were shopping, many of you also added an extra bag of kibble, a box of cookies, or treats to be delivered directly to Homeward Bound. What a simple and thoughtful way to give.

GIFTS LARGE AND SMALL.

And as the years pass – sometimes, sadly, so do our human friends. We are touched beyond measure that they have included Homeward Bound in their last wishes and bequests so our work will continue long into the future. Gifts today or in the future – gifts large and small – all make a difference as Homeward Bound relies primarily on the generosity of its individual and corporate donors. However you choose to give, we thank you.



I'll be your furry friend for life love.

Etched In Our Hearts

Every dog that comes through our doors is special to us. But some stand out for their exceptional needs and the care they required. Highlighted here are just a few of our most memorable “tails” from 2016.



Faith and Hope

Surrendered to us by a breeder as puppies. We named them Faith and Hope because both arrived with Megaesophagus – an enlargement of the esophagus that makes it impossible to keep food down unless the dogs are fed special meals and kept upright for 30 minutes after eating. We would soon discovered that this was only a symptom of a larger issue: a hereditary muscle disease called CNM that weakens the tissue and will affect both for life. Special dogs need special people. And Faith and Hope (now Sophie) found theirs in a volunteer who adopted them both – along with one other special needs pup...just for good measure!



Molly & Harley's Giant Puppies

Puppies anyone? An “accidental” breeding by a woman who could not care for two adult dogs much less 12 puppies. Partnering with Forever Friends Golden Retriever Rescue of Ventura, CA, the 12 were transported to our waiting van outfitted with a whelping box for the long ride home. Dad was quickly adopted, while mom – nearly a puppy herself – stayed behind to nurse. As soon as we could, we freed her and then worked on nurturing the exhausted girl back to health. Great mama that she was, the puppies grew strong and healthy in the Puppy Palace built by our supporters until the entire Giants team rounded the bases and made a home run! What work... and what fun.



Daphne

At only 10 months when she arrived, we knew that Daphne had a promising future. She just couldn't quite see it because of the cataracts covering her eyes. As soon as she was old enough, we supported her special surgery to remove them. A whole new world opened up for her – complete with a whole new family.



Sadie & Gage. Tied to each other. Three feet of chain between them. A dilapidated fruit crate, their only shelter from the freezing rain. Someone long connected to our rescue saw them out of the corner of his eye as he drove by. He backed up and stopped. He secured their release and got them to safety at Homeward Bound. Bonded through adversity, but with vastly different ages and needs, each found a home best suited to ensuring a joyful second chapter and emotional healing.



Going home love.

How You Can Help

Homeward Bound relies almost solely on generous contributions from individuals and corporate donations. Whether financial, material - or gifts of time and talent – there are many ways to contribute to our effort.

FINANCIAL SUPPORT

Homeward Bound conducts three major fundraising events activities and additional drives as special needs dictate. Follow us on Facebook, sign-up for our newsletters, or check our website for upcoming events – or just click “Donate” anytime! Your gifts are always welcome.

PLANNED GIFTS

Leave a lasting legacy that may also offer benefits to you or your heirs. You will find information on our website under “How To Help.” Your tax or financial advisor can advise you on the best approach for your unique situation.

IN-KIND SUPPORT

Big dogs have big needs, and the everyday things add up quickly. On our website, you will find a list of supplies we always need. Look for “Wish List” under “How to Help.” Or just click the Amazon Wish List link on the top of our home page for an easy way to help.

VOLUNTEER

Have a particular skill? Or just want to spend time working with the dogs? We need you! Complete an application on our website, and we’ll find the perfect spot for you and your talents.

FOSTER

There is no greater gift than providing a dog in need with a caring home and the support it needs to become adoptable. Complete the application on our website if you would like to provide short or long-term foster.

Everyone everywhere can play a role in supporting our work. Here are just a few ways that you can help:

- Spread the word about the importance of spay and neuter
- Educate others about puppy mills and responsible breeders
- Train and socialize your dog from the very beginning; educate others about the importance
- Learn how to report neglect or abuse in your community (each community is different)
- Help an elderly or ill neighbor to keep their pet in their home by lending a hand
- Donate – in whatever way works best for you



**IT'S MY JOB TO PROTECT YOU LOVE.
EVEN WHEN YOU DON'T SHARE THE PEOPLE FOOD LOVE.**

Financials 2016

CONDENSED STATEMENT OF ACTIVITIES (Year ended December 31, 2016)

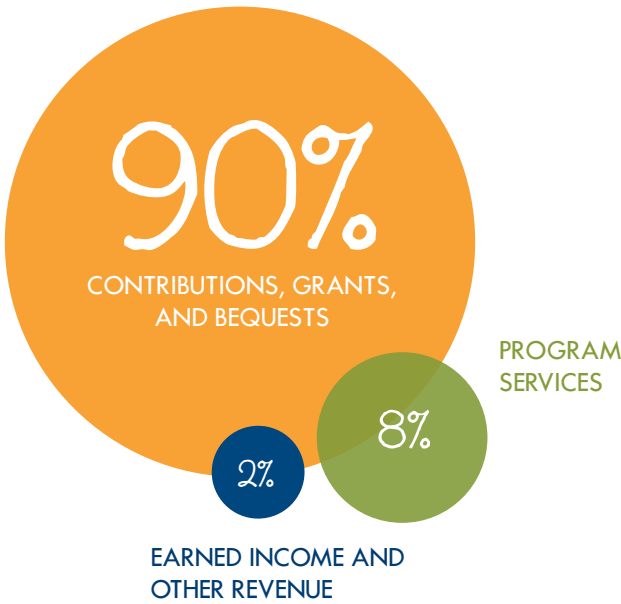
REVENUES, GAINS, AND OTHER SUPPORT:

Contributions, grants, and bequests	\$ 734,260
Program services	\$ 69,360
Earned income and other revenue	\$ 14,105
Cost of good sold	\$ 1,119
TOTAL REVENUES, GAINS, AND OTHER SUPPORT	\$ 818,844

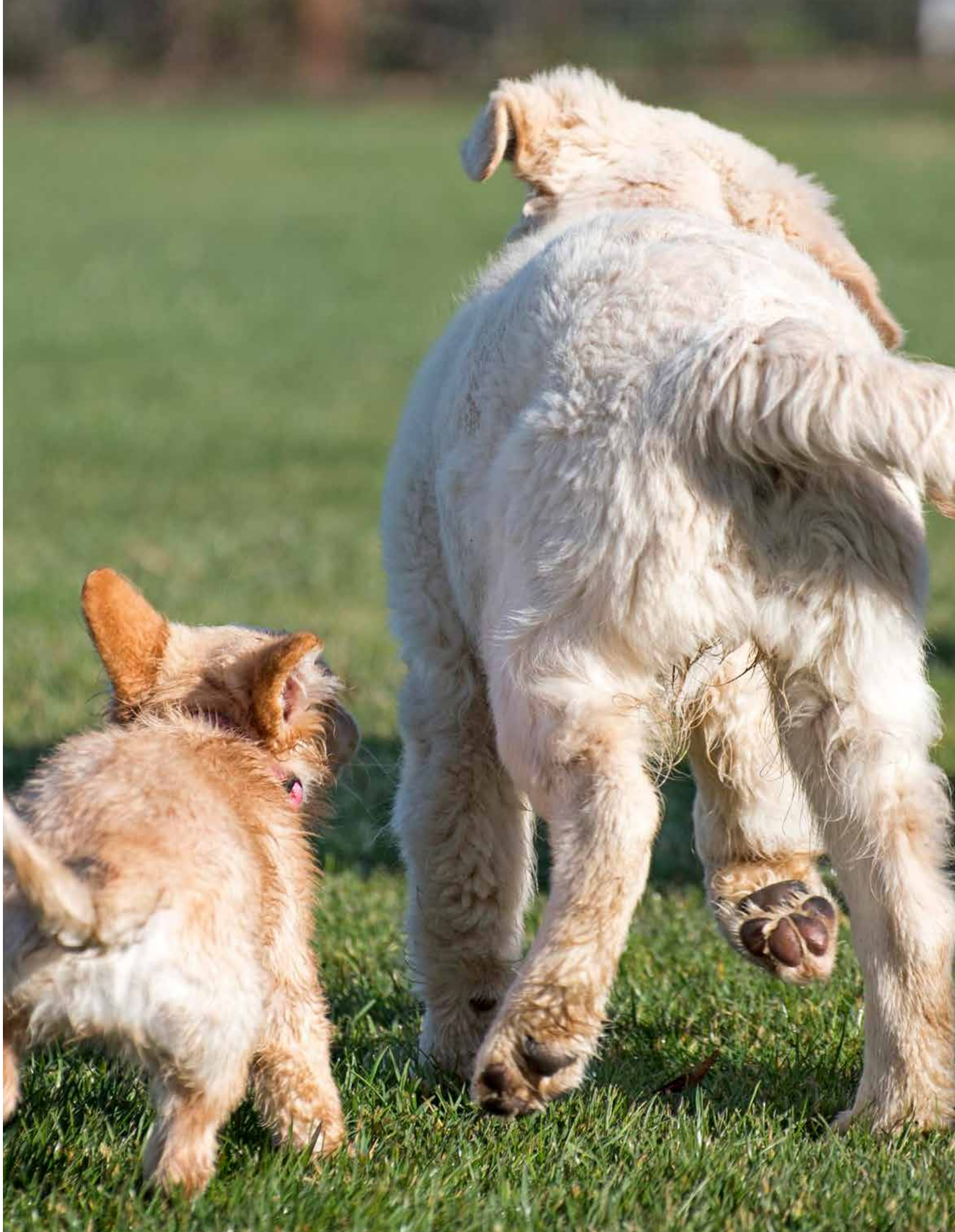
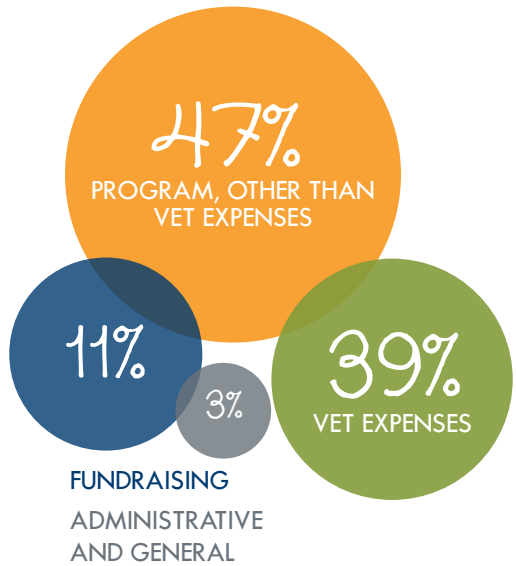
EXPENSES:

Program	\$ 454,462
Fundraising	\$ 56,527
Administrative and general	\$ 18,393
TOTAL EXPENSES	\$ 529,382
NET ORDINARY INCOME & NET INCOME	\$ 289,462

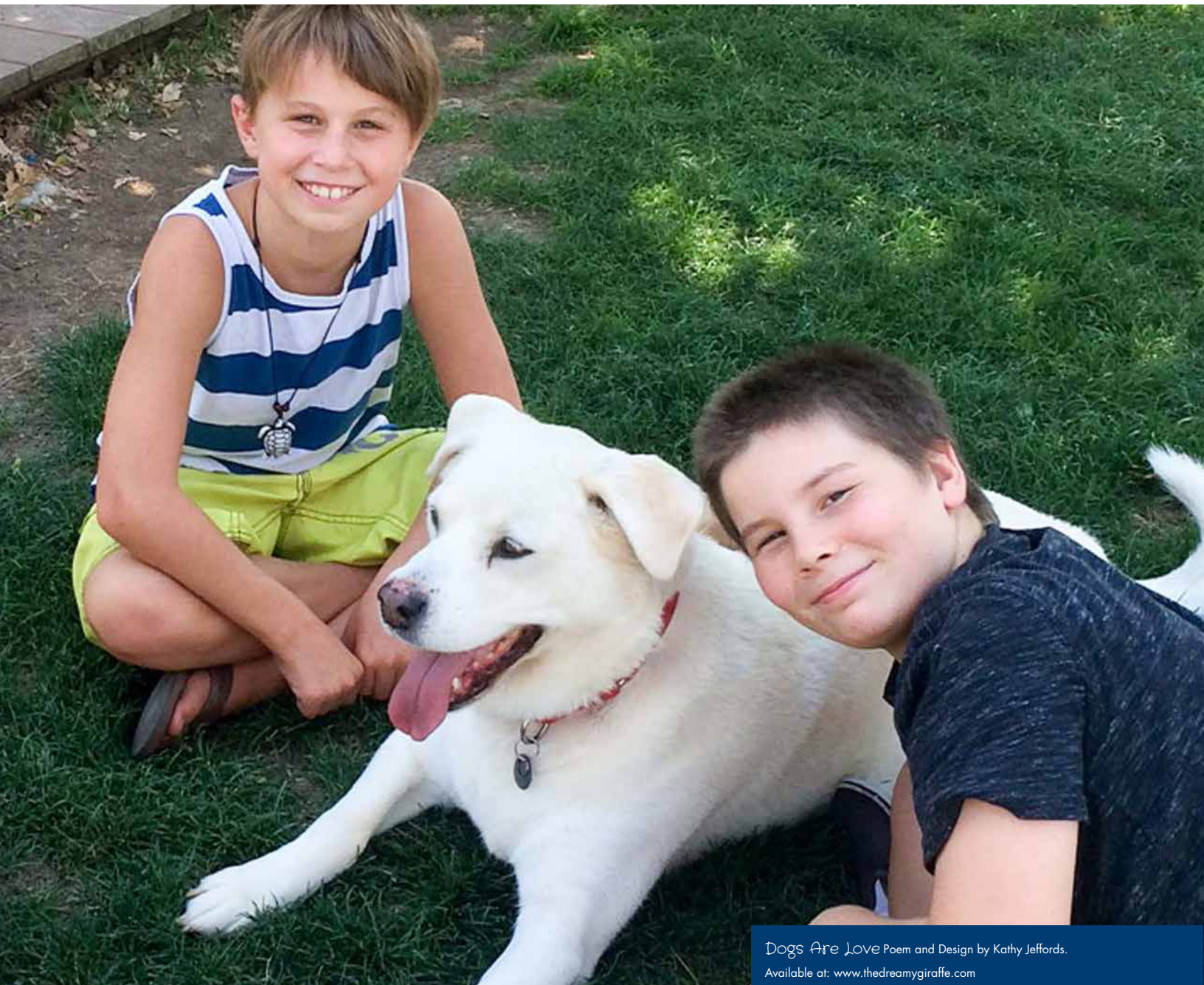
2016 Revenue



2016 Expenses



1000% LOYAL LOVE.



Dogs Are Love Poem and Design by Kathy Jeffords.
Available at: www.thedreamygiraffe.com



**HOMeward
BOUND** Golden
Retriever
Rescue

7495 Natomas Road, Elverta, CA 95626

Phone: 916-655-1410 Fax: 916-655-3410

www.homewardboundgoldens.org